



HIRALAL BHAKAT COLLEGE

ESTD.- 1986

NALHATI, BIRBHUM, WEST BENGAL, PIN.- 731220
(Affiliated to the University of Burdwan and Re-accredited by NAAC)
Contact No.- +91 96476 20782
Email.- hbcollege@gmail.com
Website.- www.hbcnht.edu.in

Student Satisfactory Survey (2019-2020)

Feedback form for Teacher Evaluation by Students (2019-20)

Analyzing Feedback form for Teacher Evaluation by Students against specific parameters such as class routine, regularity, library staff cooperation, cleanliness, hygiene, approachability of principal, office staff cooperation, and teacher approachability reflects valuable insights into areas of strength and opportunities for improvement. By adopting a systematic approach to data analysis, our colleges can effectively address students' concerns, enhance the overall educational experience, and build trust within the educational community.

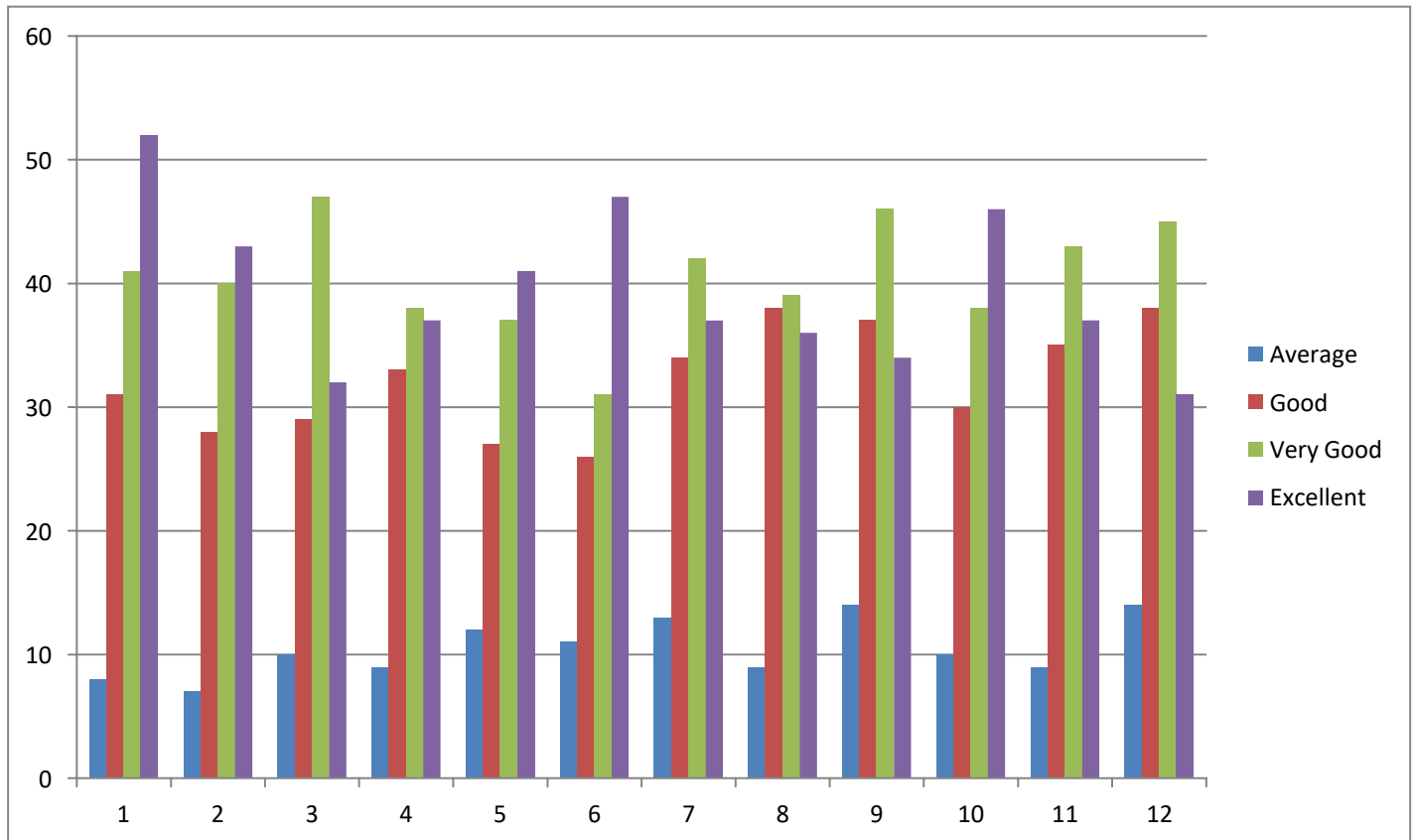
In its endeavour to ensure quality services Hiralal Bhakat College collects Student feedback form through Offline mode from the final semester students at late November 2021 (Due to COVID-19 Pandemic). The feedback for the session 2019-20 has been collected from the batch of 2017-2018. The Feedback form for Teacher Evaluation by Students (2019-20) has been collected on the following parameters.

Table 1: Feedback form for Teacher Evaluation by Students

| SL No. | Teacher's Assessment Grades | Average | Good | Very Good | Excellent |
|--------|--|---------|------|-----------|-----------|
| 1 | How much regular and punctual is the respective faculty in taking classes? | 8 | 31 | 41 | 52 |
| 2 | Is the syllabus of the course completed on time? | 7 | 28 | 40 | 43 |
| 3 | Are the classes interactive in nature? (ICT enabled teaching tools) | 10 | 29 | 47 | 32 |
| 4 | Does the faculty provide equal attention to all students present in the class? | 9 | 33 | 38 | 37 |
| 5 | Is the teacher approachable for various situational problems? | 12 | 27 | 37 | 41 |
| 6 | Are relevant study materials provided / referred to for the pursuance of the course? | 11 | 26 | 31 | 47 |
| 7 | Is the presentation of the concerned teacher attractive? | 13 | 34 | 42 | 37 |
| 8 | How much the learning values (Knowledge, Concepts, Skills, Abilities) taken by the respective Faculty facilitated to the students? | 9 | 38 | 39 | 36 |

| | | | | | |
|----|---|----|----|----|----|
| 9 | Does the respective faculty focus on increasing student's participation in class? | 14 | 37 | 46 | 34 |
| 10 | Does the concerned teacher provide lecture outline prior to during the class? | 10 | 30 | 38 | 46 |
| 11 | Does the respective faculty take regular class to improve the performance of the students? | 9 | 35 | 43 | 37 |
| 12 | How much the teacher enlightens the students about future prospects of the course / Subjects? | 14 | 38 | 45 | 31 |

Feedback form for Teacher Evaluation by Students (2019-20)



The feedback received from students across various parameters indicates a generally very positive perception of the college's performance. While the majority of feedback is positive, there are areas that require attention and improvement to enhance the overall satisfaction levels. Last few years lots of initiative has been taken. But still now improvements are require in various ground. For providing effective teaching learning environment lots of initiative have to adopt in future.



HIRALAL BHAKAT COLLEGE

ESTD.- 1986

NALHATI, BIRBHUM, WEST BENGAL, PIN.- 731220

(Affiliated to the University of Burdwan and Re-accredited by NAAC)

Contact No.- +91 96476 20782

Email.- hbcollege@gmail.com

Website.- www.hbcnht.edu.in

General Feedback form (2019-20)

Analyzing General Feedback against specific parameters such as class routine, regularity, library staff cooperation, cleanliness, hygiene, approachability of principal, office staff cooperation, and teacher approachability reflects valuable insights into areas of strength and opportunities for improvement. By adopting a systematic approach to data analysis, our colleges can effectively address students' concerns, enhance the overall educational experience, and build trust within the educational community.

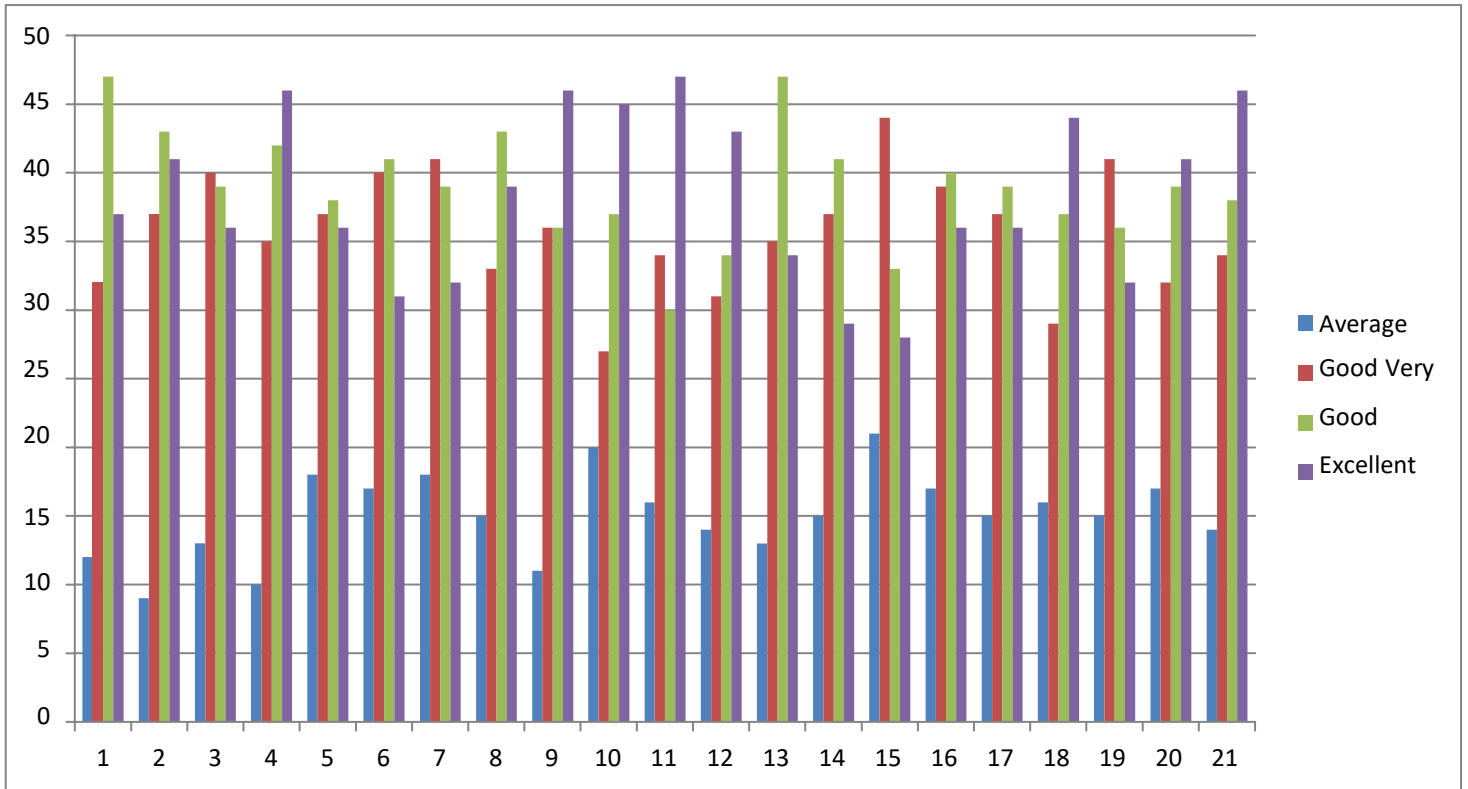
In its endeavour to ensure quality services Hiralal Bhakat College collects Student feedback form through Offline mode from the final semester students at late November 2021 (Due to COVID-19 Pandemic). The feedback for the session 2019-20 has been collected from the batch of 2017-2018. General feedback analysis of each departments as well as the college has been summarized as below:

Table 2: General Feedback form (2019-20)

| SL No. | General Feedback form | Average | Good | Very Good | Excellent |
|--------|---|---------|------|-----------|-----------|
| 1 | How regular are the teachers in the taking classes? | 12 | 32 | 47 | 37 |
| 2 | How approachable are the teachers either written the class or outside the class? | 9 | 37 | 43 | 41 |
| 3 | How approachable is the principal of college? | 13 | 40 | 39 | 36 |
| 4 | How timely does college office circulate notice and other relevant facilities? | 10 | 35 | 42 | 46 |
| 5 | How regularly are the classrooms and toilets of college Cleaned? | 18 | 37 | 38 | 36 |
| 6 | How successfully is the quality of drinking water maintained in college campus? | 17 | 40 | 41 | 31 |
| 7 | How would you like to rate the quality availability and price of food available in college canteen? | 18 | 41 | 39 | 32 |
| 8 | How effective is the career counseling cell of college? | 15 | 33 | 43 | 39 |
| 9 | How cooperative and well behaved is the office staff? | 11 | 36 | 36 | 46 |
| 10 | How useful is the internet connectivity in college campus? | 20 | 27 | 37 | 45 |

| | | | | | |
|----|--|----|----|----|----|
| 11 | How useful is the college library and different laboratories? | 16 | 34 | 30 | 47 |
| 12 | How effective is the college office in assisting student availing different scholarship/concessions/free ship etc? | 14 | 31 | 34 | 43 |
| 13 | How peaceful and gender friendly is the college campus? | 13 | 35 | 47 | 34 |
| 14 | How useful is the free wi-fi zones of college? | 15 | 37 | 41 | 29 |
| 15 | How effective is the Grievance Redressed and the Gender Cell of the college? | 21 | 44 | 33 | 28 |
| 16 | How effective is the CAMS portal and operand free interactions through whatsapp groups? | 17 | 39 | 40 | 36 |
| 17 | How useful are the health check-up and health awareness camps arranged in college? | 15 | 37 | 39 | 36 |
| 18 | How effectively does college handle sudden illness of Students? | 16 | 29 | 37 | 44 |
| 19 | How useful are the compassing ventures through various companies and arranged by college? | 15 | 41 | 36 | 32 |
| 20 | How effective are the outreach programmes arranged by NSS and NCC wings of college? | 17 | 32 | 39 | 41 |
| 21 | Remarks or Suggestions if any | 14 | 34 | 38 | 46 |

Student Feedback form (2019-20)



The feedback received from students across various parameters indicates a generally very positive perception of the college's performance. While the majority of feedback is positive, there are areas that require attention and improvement to enhance the overall satisfaction levels. Last few years lots of initiative has been taken. But still now improvements are require in various ground. For providing effective teaching learning environment lots of initiative have to adopt in future.



HIRALAL BHAKAT COLLEGE

ESTD.- 1986

NALHATI, BIRBHUM, WEST BENGAL, PIN.- 731220
(Affiliated to the University of Burdwan and Re-accredited by NAAC)

Contact No.- +91 96476 20782

Email.- hbccollege@gmail.com

Website.- www.hbcnht.edu.in

Parent Feedback (2019-20)

Analyzing parents' feedback against specific parameters such as class routine, regularity, library staff cooperation, cleanliness, hygiene, approachability of principal, office staff cooperation, and teacher approachability reflects valuable insights into areas of strength and opportunities for improvement. By adopting a systematic approach to data analysis, our colleges can effectively address parents' concerns, enhance the overall educational experience, and build trust within the educational community. Parents' feedback analysis of each departments as well as the college has been summarized as below:

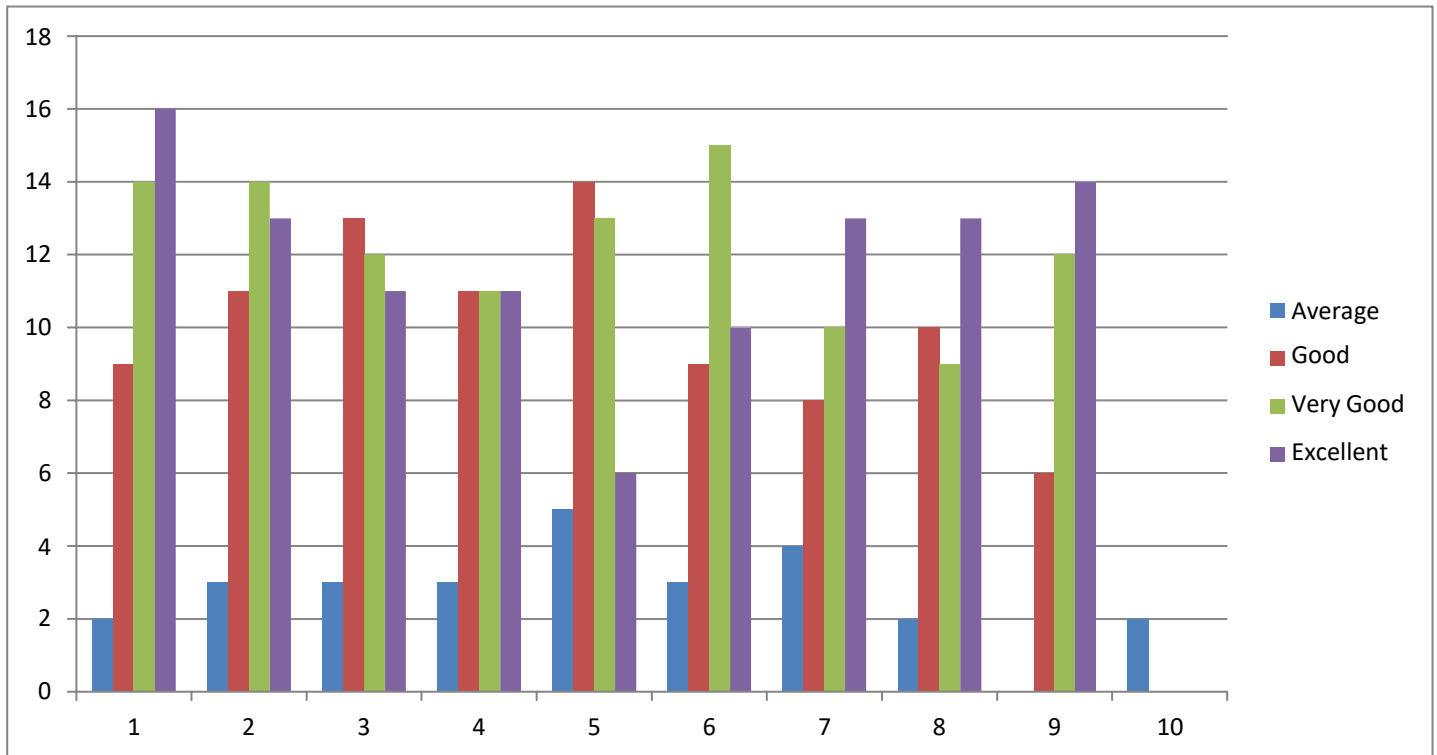
In its endeavour to ensure quality services Hiralal Bhakat College collects Parent feedback form through Offline mode at late November 2021 (Due to COVID-19 Pandemic). The feedback for the session 2019-20 has been collected from the batch of 2017-2018. Parent feedback analysis (2019-20) has been summarized as below:

Table 3: Parent Feedback (2019-20)

| SL No. | Parent Feedback | Average | Good | Very Good | Excellent |
|--------|--|---------|------|-----------|-----------|
| 1 | How well the class routine has been arranged? | 2 | 9 | 14 | 16 |
| 2 | How much regularity is maintained about the classes? | 3 | 11 | 14 | 13 |
| 3 | How much co-operation is received form library staff? | 3 | 13 | 12 | 11 |
| 4 | How far cleanliness and hygiene is maintained in college campus? | 3 | 11 | 11 | 11 |
| 5 | How regular are the toilets in the college cleaned properly? | 5 | 14 | 13 | 6 |
| 6 | How much approachable is the Principal of college? | 3 | 9 | 15 | 10 |
| 7 | How much co-operation are the office staffs of college? | 4 | 8 | 10 | 13 |
| 8 | Are the teachers of college approachable? | 2 | 10 | 9 | 13 |

| | | | | | |
|----|--|---|---|----|----|
| 9 | What is your over all analysis of the intuition? | 0 | 6 | 12 | 14 |
| 10 | Do you have any other opinion/suggestions? | 2 | 0 | 0 | 0 |

Parent Feedback (2019-20)



The feedback received from parents across various parameters indicates a generally positive perception of the college's performance. While the majority of feedback is positive, there are areas that require attention and improvement to enhance the overall satisfaction levels further.

This report offers a comprehensive overview of the parent feedback received across different parameters related to the college's performance. It serves as a valuable resource for the college administration, faculty, and stakeholders to understand parent perceptions, identify strengths and areas for improvement, and make informed decisions to enhance the overall educational experience and satisfaction levels within the college community.



HIRALAL BHAKAT COLLEGE

ESTD.- 1986

NALHATI, BIRBHUM, WEST BENGAL, PIN.- 731220

(Affiliated to the University of Burdwan and Re-accredited by NAAC)

Contact No.- +91 96476 20782

Email.- hbcollge@gmail.com

Website.- www.hbcnht.edu.in

Alumni Feedback (2019-20)

Analyzing Alumni feedback against specific parameters such as class routine, regularity, library staff cooperation, cleanliness, hygiene, approachability of principal, office staff cooperation, and teacher approachability reflects valuable insights into areas of strength and opportunities for improvement. By adopting a systematic approach to data analysis, our colleges can effectively address Alumni concerns, enhance the overall educational experience, and build trust within the educational community.

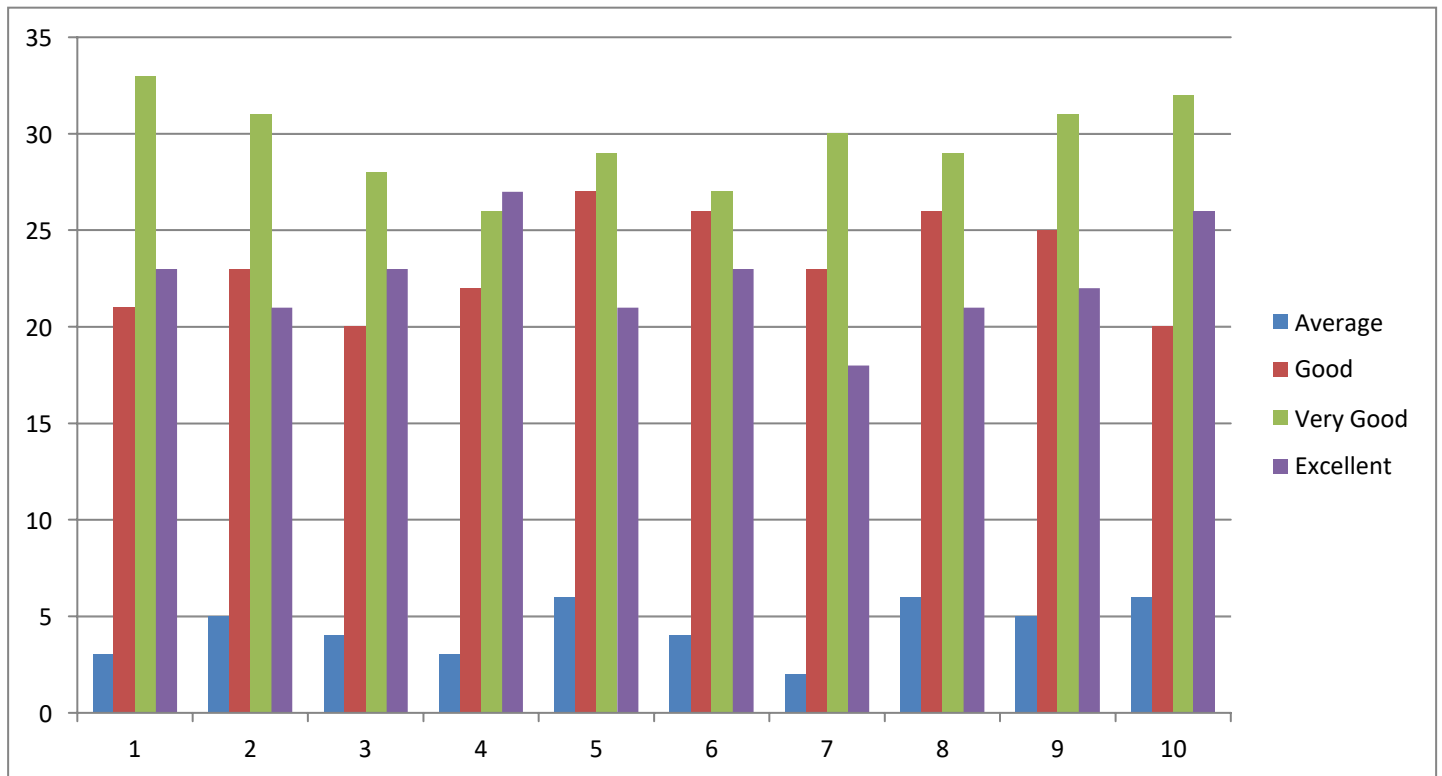
In its endeavour to ensure quality services Hiralal Bhakat College collects Student feedback form through Offline mode from the final semester students at late November 2021 (Due to COVID-19 Pandemic). The feedback for the session 2019-20 has been collected from the batch of 2017-2018. Alumni feedback analysis (2019-20) of each departments as well as the college has been summarized as below:

Table 4: Alumni Feedback (2019-20)

| SL No. | Alumni Feedback | Average | Good | Very Good | Excellent |
|--------|---|---------|------|-----------|-----------|
| 1 | How effective are the facilities provided to the students? | 3 | 21 | 33 | 23 |
| 2 | How useful are the faculties and classes for future prospects? | 5 | 23 | 31 | 21 |
| 3 | How useful are the library resources for academic excellence? | 4 | 20 | 28 | 23 |
| 4 | How much helpful and approachable is the Principal of the college? | 3 | 22 | 26 | 27 |
| 5 | How much co-operation is usually received from the office staff? | 6 | 27 | 29 | 21 |
| 6 | How much cleanliness and hygiene is maintained in the college campus? | 4 | 26 | 27 | 23 |
| 7 | How much cultural activities are encouraged in the college? | 2 | 23 | 30 | 18 |
| 8 | How much effective are the career counseling activities in the college? | 6 | 26 | 29 | 21 |

| | | | | | |
|----|---|---|----|----|----|
| 9 | How effective are the outreach activities (through NSS and NCC) in the college? | 5 | 25 | 31 | 22 |
| 10 | How much active are the different students welfare related cells (Anti Raging cell, Gender cell, Grievance, redressed cells)? | 6 | 20 | 32 | 26 |

Alumni Feedback (2019-20)



The feedback received from Alumni across various parameters indicates a generally positive perception of the college's performance. While the majority of feedback is positive, there are areas that require attention and improvement to enhance the overall satisfaction levels further.

This report offers a comprehensive overview of the Alumni feedback received across different parameters related to the college's performance. It serves as a valuable resource for the college administration, faculty, and stakeholders to understand parent perceptions, identify strengths and areas for improvement, and make informed decisions to enhance the overall educational experience and satisfaction levels within the college community.



HIRALAL BHAKAT COLLEGE

ESTD.- 1986

NALHATI, BIRBHUM, WEST BENGAL, PIN.- 731220
(Affiliated to the University of Burdwan and Re-accredited by NAAC)

Contact No.- +91 96476 20782

Email.- hbcollge@gmail.com

Website.- www.hbcnht.edu.in

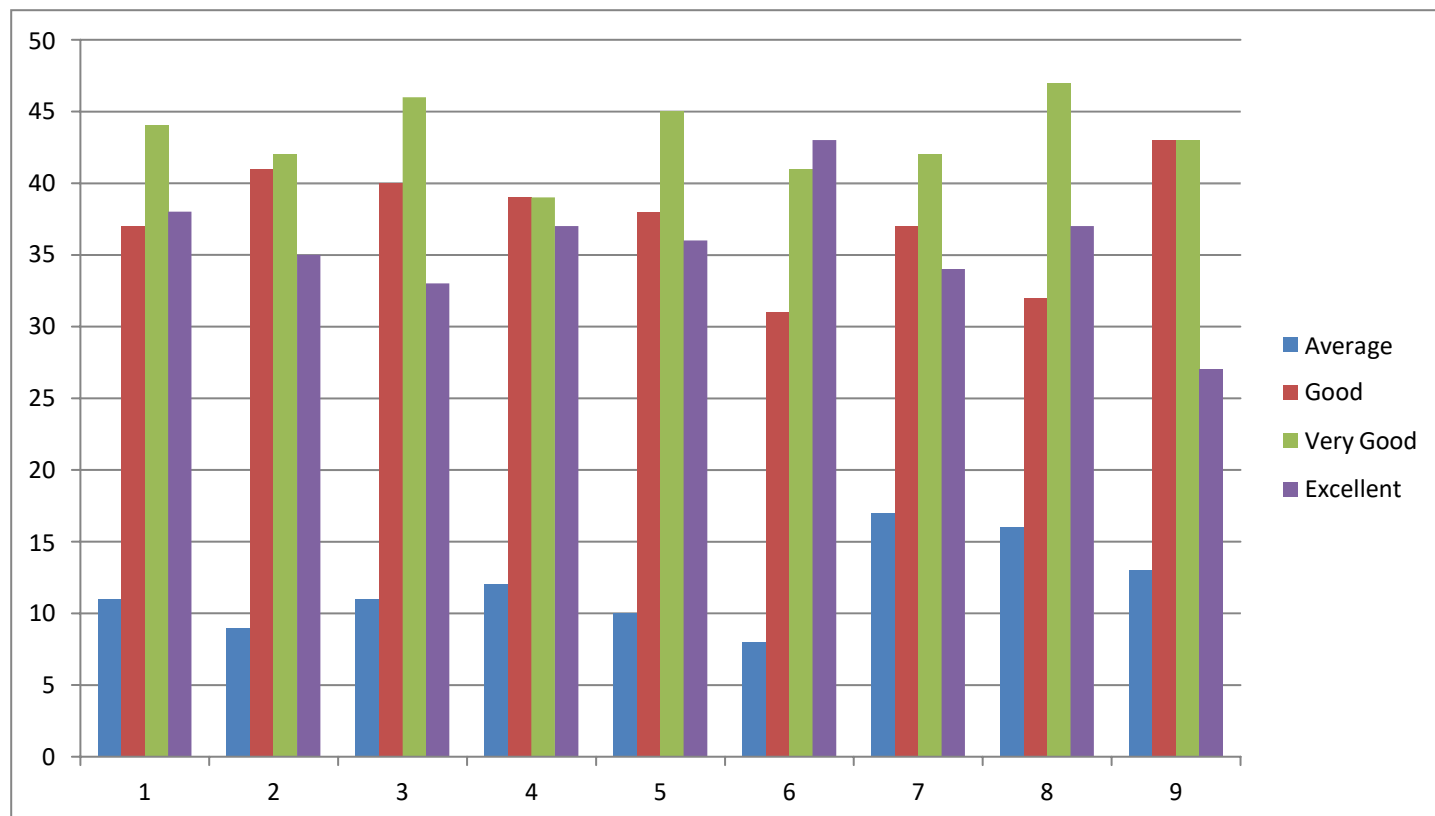
Library Feedback (2019-20)

Library is the soul of the institution; which plays crucial role in the development of knowledge. In its endeavour to ensure quality library services of Department of Library, Hiralal Bhakat College collects feedback form through Offline mode from the final semester students at late November 2021 (Due to COVID-19 Pandemic). The feedback for the session 2019-20 has been collected from the batch of 2017-2018. The Feedback has been collected on the following parameters.

Table 5: Library Feedback (2019-20)

| SL No. | Library Feedback | Average | Good | Very Good | Excellent |
|--------|--|---------|------|-----------|-----------|
| 1 | How much useful and relevant are the resources available in the library? | 11 | 37 | 44 | 38 |
| 2 | How much co-operative are the library staffs? | 9 | 41 | 42 | 35 |
| 3 | How much do you rate the photocopy facility available in the library? | 11 | 40 | 46 | 33 |
| 4 | How regular can the students access the e-resources of the library? | 12 | 39 | 39 | 37 |
| 5 | How satisfactory is the internet facility available in the library? | 10 | 38 | 45 | 36 |
| 6 | How effective is the reading space in the library? | 8 | 31 | 41 | 43 |
| 7 | How regularly is the library cleaned? | 17 | 37 | 42 | 34 |
| 8 | How much do you rate the rules and regulations of the library? | 16 | 32 | 47 | 37 |
| 9 | How regularly do you like visiting the library | 13 | 43 | 43 | 27 |

Library Feedback (2019-20)



This report offers a comprehensive overview of the Library feedback received across different parameters related to the college's performance. It serves as a valuable resource for the college Students, faculty, and stakeholders to gain proper knowledge and a great source of information.

Suggestions from the student for improvement of library

- (1) A proper reading room space is required.
- (2) Furniture in the reading room should be improved.

Jadon S.

Principal/TIC
Hiralal Bhakat College
Nalhati, Birbhum

Teacher-in-Charge
Hiralal Bhakat College
Nalhati, Birbhum

